



ABSOLUTE POTENTIAL. UNLIMITED ALTITUDE.

AN ATMOSPHERE OF OPPORTUNITY



WELCOME TO THE NEW JERSEY AVIATION INNOVATION HUB

FEATURING:

- The FAA William J. Hughes Technical Center (FAA Tech Center), North America's preeminent aviation testing and certification facility.
- Atlantic City International Airport (ACY), a Smart Airport Testbed operated by the South Jersey Transportation Authority.
- The National Aerospace Research & Technology Park (NARTP), a research park adjacent to the FAA Tech Center on 58 acres, with build-to-suit development opportunities.





**EASY ACCESS TO MORE
THAN 30% OF THE
U.S. POPULATION.**

Distance from Aviation
Innovation Hub to Major Cities.

Baltimore, MD - 152 mi

Boston, MA - 338 mi

Dulles, VA - 204 mi

Newark, NJ - 111 mi

New York, NY - 140 mi

Philadelphia, PA - 57 mi

Richmond VA - 296 mi

IN EVERY INDUSTRY THERE IS A **CENTRAL LOCATION** THAT SERVES AS THE **HUB FOR ACTIVITY.**

- Companies that work in government are in Washington, D.C.
- Companies that work in entertainment are in Los Angeles.
- Companies that work in computer technology are in Silicon Valley.

AND COMPANIES THAT SPECIALIZE IN AVIATION
RESEARCH COME TO **ATLANTIC COUNTY, NJ.**

IMAGINE THE POWER AND EFFICIENCY OF:


- Working shoulder-to-shoulder with FAA regulators, scientists and subject matter experts (SMEs).
- Having access to 500,000 square feet of aviation-related laboratory space at the FAA Tech Center.
- Working on a campus that includes a fully-operational airport for real-world testing.
- Direct access to live data feeds from the FAA, including En Route flight data, surface movement data, approach surveillance radar data, weather data, and much more.




**Spirit Airlines serves ACY
with 10 outbound flights daily.**





WHAT COULD YOUR RESEARCH TEAM ACHIEVE WITH ALL OF THESE RESOURCES AT YOUR FINGERTIPS?



All of this and more is happening right now in Atlantic County, New Jersey's only designated "Aviation District," encompassing **more than 5,000 acres**.



Explore development potential and inquire about incentives.



Talk to us about Uncrewed Aircraft Systems (UAS) and Advanced Air Mobility (AAM) testing opportunities associated with our uncongested air space, mere miles away from the bustling Philadelphia and New York markets.

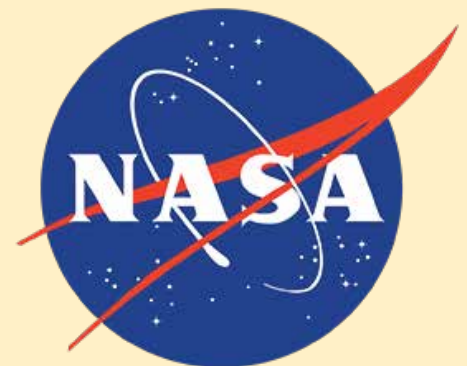
Leverage our relationships with government, academia, and the U.S. military at Joint Base McGuire-Dix-Lakehurst.



Learn why a growing list of innovative companies, academic institutions, and government agencies – including the FAA and NASA – have taken space at our aerospace research park.



For more information on the New Jersey Aviation Innovation Hub or to arrange a tour, visit www.aceanj.com/aviation, or call (609) 245-0019.



AVIATION INNOVATION HUB ASSETS

FAA TECH CENTER

National aviation research and testing hub.

ATLANTIC CITY INTERNATIONAL AIRPORT

A joint civil-military airport serving 75 non-stop destinations.

NATIONAL AEROSPACE RESEARCH & TECHNOLOGY PARK (NARTP)

A non-profit organization on a 58-acre campus adjacent to the FAA Tech Center. NARTP is dedicated to facilitating research and development and commercialization of emerging aviation technologies.

THUNDER ROOM: Tenants of NARTP can access this state-of-the-art multi-media conference room.

ON SITE CONCIERGE SERVICE

Provided by the Atlantic County Economic Alliance (609) 245-0019 to support business/job growth and access to the Aviation Innovation Hub.

ACADEMIC PARTNERS

Embry-Riddle Aeronautical University, Stockton University, Rowan University, Atlantic Cape Community College, and the Atlantic County Institute of Technology.

STRATEGIC PARTNERS

The National Institute of Aerospace, a nonprofit research, graduate education, and outreach institute; the Atlantic County Improvement Authority, which serves as Atlantic County's multi-purpose financing, development, and project management agency; and the South Jersey Transportation Authority, a state-level agency which manages Atlantic City International Airport.

FAA Tech Center



Atlantic City International Airport



National Aerospace Research & Technology Park (NARTP)



NARTP Thunder Room



AVIATION INNOVATION HUB ASSETS

PROXIMITY TO ONE THIRD OF THE U.S. POPULATION

Philadelphia, New York, Baltimore, Washington D.C., and Boston.

FAA DATA FEEDS

NARTP tenants have access to live data feeds from the FAA.

CUSTOMIZED DEVELOPMENT OPPORTUNITIES

Hundreds of acres available for aviation-related development.

WORKFORCE DEVELOPMENT

Aviation training available through Atlantic Cape Community College, Atlantic County Institute of Technology, and a planned Aviation Training Academy of the Future.

RELATIONSHIPS WITH U.S. MILITARY

177th Fighter Wing, U.S. Coast Guard, Joint Base McGuire-Dix-Lakehurst.

RELATIONSHIPS WITH ON-SITE FEDERAL AGENCIES

FAA, TSA, Air Marshals.

SMART AIRPORT TESTBED

Atlantic City International Airport welcomes Smart Airport related research and testing proposals.

EXCELLENT AIRSPACE

Uncongested airspace for potential flight testing over the ocean or land with low population density.

AIRPORT BUSINESS CENTER

Hotel and conference space approved with expected grand opening in 2023.

WORLD CLASS BEACHES AND ENTERTAINMENT

Less than 10 miles away in Atlantic City, Brigantine, Ventnor, Margate, and Longport.

ACIT Classroom at NARTP



ACIT Classroom at NARTP



Airport Business Center



Atlantic City Skyline



SUCCESS IN ATLANTIC COUNTY

GLOBAL CROSSING AIRLINES

The Atlantic County Economic Alliance (ACEA) collaborated with the South Jersey Transportation Authority (SJTA – the owner and operator of Atlantic City International Airport) and Global Crossing Airlines (GlobalX) to bring new charter airline service to ACY.



Ed Wegel, Chairman and CEO of Global Crossing Airlines, welcomes 15 southern New Jersey residents as they begin training to become the first group of flight attendants for the charter airline that will operate from Atlantic City International Airport.



Lauren Moore, Jr., and Noel McGuire (second and third from right) of the ACEA, welcome the southern New Jersey residents hired by Global Crossing Airlines (GlobalX) to serve as the charter airline's first cadre of Atlantic City-based flight attendants. The ACEA helped to attract GlobalX to begin charter airline service at ACY.



**THE ACEA PARTNERED
WITH ISRAEL AEROSPACE
INDUSTRIES (IAI) TO SHOWCASE
THE INTERNATIONAL FIRM'S
NEW EQUIPMENT AT ACY. IAI
DEMONSTRATED "GRENADA,"
WHICH USES ULTRAVIOLET LIGHT
TO DISINFECT EQUIPMENT AND
SURFACES, AND "TAMAR," A
REMOTE MONITORING SYSTEM
THAT RAPIDLY MEASURES
A PERSON'S RESPIRATORY
RATE, HEART RATE AND BODY
TEMPERATURE FROM A SAFE
DISTANCE.**



TECHNOLOGY DEVELOPMENT IN ATLANTIC COUNTY



ISRAEL AEROSPACE INDUSTRIES

The ACEA also attracted international aerospace firm, Israel Aerospace Industries (IAI), to Atlantic County to test and showcase its state-of-the-art, travel safety products to protect passenger health and mitigate the spread of illness and disease through air travel.



TECHNOLOGY DEVELOPMENT IN ATLANTIC COUNTY

DRONE-INTEGRATED EMERGENCY RESPONSE DRILL

The Aviation Innovation Hub hosted a simulated post-hurricane emergency exercise that utilized both crewed and uncrewed aircraft to provide early intelligence, imagery and mapping during and after catastrophic emergencies, like hurricanes. County, state and federal partners including the FAA, the New Jersey State Police, 177th Air National Guard, U.S. Coast Guard, and some of the nation's biggest names in uncrewed aircraft participated in the regional emergency response drill across southern New Jersey.



A disaster response drill hosted by the NARTP prepared first responders and emergency management agencies throughout southern New Jersey for the next natural disaster, with a focus on the safe operation of uncrewed and crewed aircraft together for search and rescue and critical infrastructure inspection.





The Federal Aviation Administration selected five host airports, including ACY, to evaluate technologies and systems that could detect and mitigate potential safety risks posed by uncrewed aircraft. The effort will lead to the creation of standards for future uncrewed aircraft detection and mitigation technologies at airports around the country.

ROWAN UNIVERSITY WINS FAA CHALLENGE

Together, Rowan University and the ACEA supported a team of engineering, business, and computer science students at Rowan University in their successful months-long quest to win the Federal Aviation Administration's national "FAA Challenge: Smart Airport Student Competition."

The team's mission was to improve public safety by empowering first responders with life-saving information before arriving on scene. Graduates from the Rowan University team formed Arke Aeronautics, which is taking full advantage of Aviation Innovation Hub assets and strategic partnerships.



Arke Aeronautics Team.

AVIATION INNOVATION HUB

Built around foundational world-class aviation assets:

- FAA Tech Center
- Atlantic City International Airport (ACY)
- National Aerospace Research & Technology Park (NARTP)
- Proposed Aviation Academy of the Future. Skills training for existing and emerging aviation technology.

FAA TECH CENTER:

- The FAA Tech Center serves as the national scientific test base for the FAA.
- Located 10 miles northwest of Atlantic City in Egg Harbor Township, covering more than 5,000 acres.
- FAA Tech Center programs include research and development, test and evaluation, verification and validation in air traffic control, communications, navigation, airports, aircraft safety, and security. Programs also include long-range development of aviation systems and concepts, development of new air traffic control equipment and software, and modification of existing systems and procedures.
- Other federal agencies on FAA Tech Center property include the Department of Homeland Security, the Federal Air Marshal Service, and the Transportation Security Lab.
- The FAA Tech Center supports 30+ research laboratories and more than 5,000 employees, including direct FAA employees and civilian contractors.



ACY HAS THE CAPACITY TO ACCOMMODATE THOUSANDS OF ADDITIONAL TAKE-OFFS AND LANDINGS A YEAR BY THE WORLD'S LARGEST AIRCRAFT. THIS AVAILABLE CAPACITY, COUPLED WITH ITS LOCATION BETWEEN MAJOR HUB CITIES LIKE PHILADELPHIA AND NEW YORK, MAKES IT A PERFECT SPOT FOR ADDITIONAL COMMERCIAL OR AIR CARGO TRAFFIC.

- Located in Egg Harbor Township, New Jersey, 10 miles northwest of Atlantic City.
- 50 miles from Philadelphia, 120 miles from New York City and 179 miles from Washington D.C.
- Class C airspace lays just outside Class B airspace of Philadelphia and New York City.
- Airport-use fees significantly lower than other airports in the Northeast.
- Operated by the South Jersey Transportation Authority (SJTA), a state-level agency.
- Serves as a base for the New Jersey Air National Guard 177th Fighter Wing and United States Coast Guard Air Station.
- Airport served by commercial carrier Spirit Airlines and other charter airlines.
- Passenger traffic: 1,134,745 (2019).
- Two runways: 13/31 10,000 feet; 4/22 6,144 feet.
- Airfield is used at 23% capacity.
- Designated a "Smart Airport Testbed."
- Airport located in a federal Opportunity Zone, which offers federal tax advantages to qualified investors.
- ACY named by the FAA as one of five airports in the U.S. to host comprehensive assessments of technology designed to detect and diminish risks posed by drones.

FEES FOR USING ATLANTIC CITY INTERNATIONAL AIRPORT ARE A FRACTION OF THOSE CHARGED BY OTHER NEARBY AIRPORTS INCLUDING: NEWARK INTERNATIONAL, JFK, AND PHILADELPHIA INTERNATIONAL.





NATIONAL AEROSPACE RESEARCH & TECHNOLOGY PARK



- 501(c)(3) non-profit organization dedicated to facilitating research and development, innovation, and commercialization of emerging aviation technologies.
- NARTP cultivates and maintains key relationships to support tenant activity and promote the regional aviation ecosystem.
- The first 66,000 square foot state-of-the-art research building opened in 2019.
- Six other buildings in planning stages with up to 340,000 square feet of customizable space available.
- Located adjacent to the FAA Tech Center and Atlantic City International Airport.
- NARTP hosts on-site symposiums, conferences, open-houses, and demonstrations.
- Unique campus setting with walking/jogging paths.
- NARTP tenants can connect to live data feeds from the FAA Tech Center.
- Tenants include the Atlantic County Economic Alliance, FAA, NASA, General Dynamics Information Technology, Thunderbolt Software, Concepts Beyond, Optimal Solutions and Technology, Diakon Solutions, Woolpert, Rowan University, and Atlantic County Institute of Technology.

OUR EXTRAORDINARY AAM/UAV ECOSYSTEM

Southern New Jersey's aviation sector emerges as a prime contender for investment, growth, and innovation. Key assets including the FAA Tech Center and the Smart Airport Testbed, in addition to our geographical location and supporting tangential industries, provide the foundation for Uncrewed Aerial Vehicle (UAV/UAS) and Advanced Aerial Mobility (AAM) innovation. New Jersey has the potential to become a global leader in the projected \$57 billion AAM market. The Aviation Innovation Hub already has many accelerators and enablers that position the Atlantic County region for continued growth and success in this market.

FEDERAL GOVERNMENT PARTNERSHIPS

FAA, TSA, Air Marshalls,
Access to NJ
Congressional Delegation

REGIONAL INDUSTRY

Casino/Hospitality Industry,
eCommerce/Air Cargo Opportunities

ACADEMIC INSTITUTIONS

Embry-Riddle
Aeronautical University,
Stockton University,
Rowan University,
Atlantic Cape
Community College,
Atlantic County Institute
of Technology

INNOVATIVE ORGANIZATIONS

National Institute of
Aerospace, Smart Airport
and Aviation Partnership,
Flight Plan Aviation
Business Accelerator

LOCAL GOVERNMENT

Atlantic County and NJ's only
"Aviation District", which
includes Egg Harbor, Hamilton
and Galloway



EXECUTE

SMART AIRPORT TESTBED & 5G EFFORTS

ACY, Designated Smart
Airport Testbed; Private
5G Network Testing

NJ AAM ECOSYSTEM ACCELERATORS

AVIATION TRAINING ACADEMY OF THE FUTURE

Development underway in consultation with Embry-Riddle
Aeronautical University, the U.S. Air Force, and the Atlantic
County Economic Alliance

AIR SPACE

Proximity to NYC, Philadelphia, "Air Jitney"
Route to Atlantic City Opportunity for test
flights over water and unpopulated areas

ACEA

Access to federal, state, and local
incentives, workforce development and
recruiting, permitting and regulatory
assistance, project facilitation, full
economic development concierge

NARTP

National Aerospace Research &
Technology Park developing 400,000
square feet of advanced aviation
research space on 58 acres adjacent
to the FAA Tech Center

NEW JERSEY STATE

Strong relationships with Governor's Office and
the South Jersey Transportation Authority

ECONOMIC DEVELOPMENT ORGANIZATIONS

ACEA, NJ Economic Development Authority, U.S. Department
of Commerce, U.S. EDA, South Jersey Economic Development
District

INCENTIVES

Federal Opportunity Zone designation,
"Aviation District" tax credits for creating jobs

NJ AAM ECOSYSTEM ACCELERATORS



SAAP

Smart Airport and Aviation Partnership

SMART AIRPORT AVIATION PARTNERSHIP

(SAAP)

- SAAP is a program located at the Aviation Innovation Hub to support development of Smart Airport technology and companies.
- SAAP is funded by a \$1.7 million federal grant to incubate, accelerate, and attract Smart Airport technology companies to the New Jersey Aviation Innovation Hub.



NATIONAL AERONAUTICS AND SPACE ADMINISTRATION

(NASA)

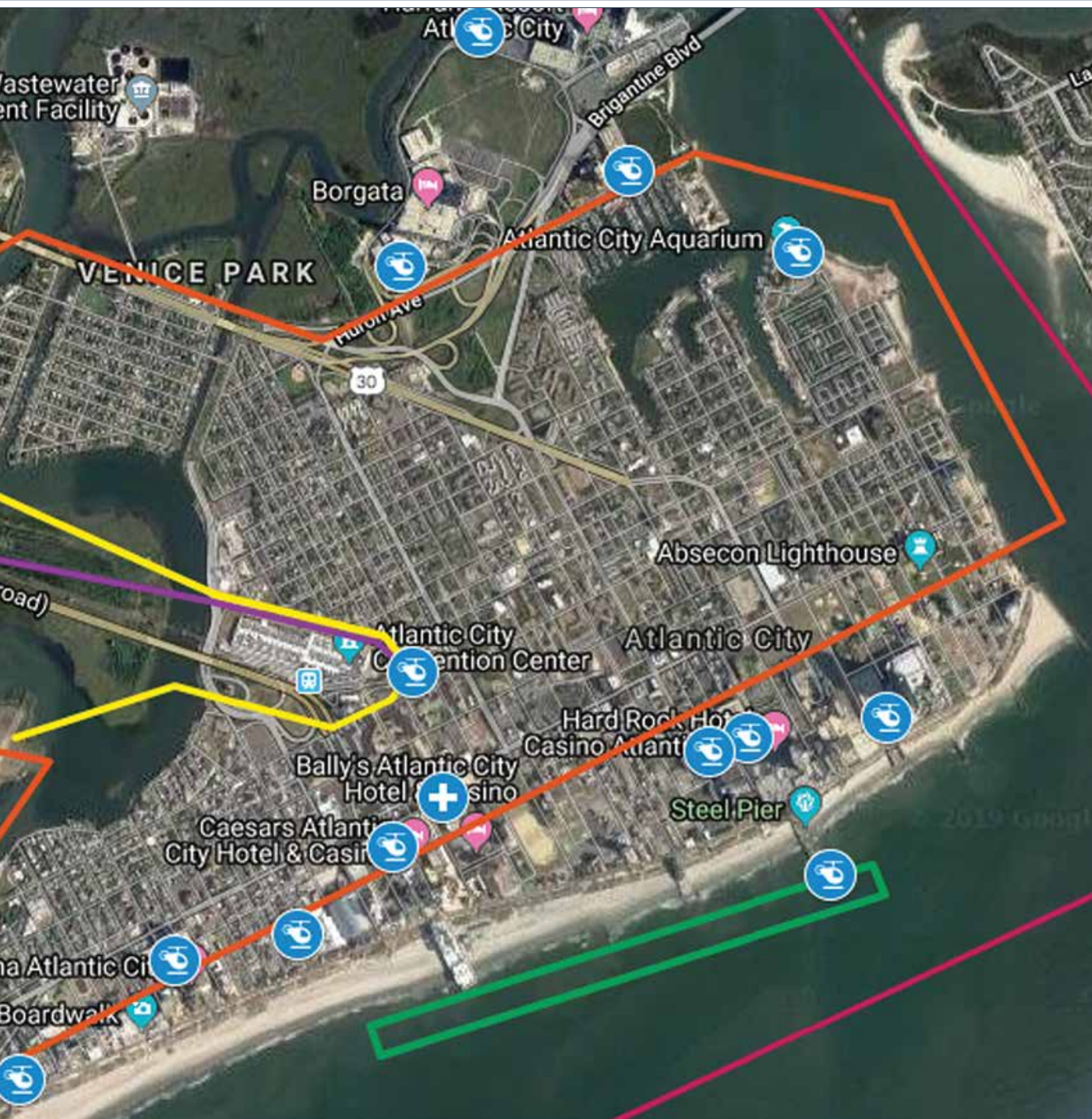
- NASA is working on-site with officials from the FAA Tech Center on the integration of Advanced Air Mobility (AAM) vehicles into the National Airspace System.

AAM is a generic term that refers to the development and testing of new and innovative technologies and systems to move people and cargo. It aims to integrate emerging aircraft technology like eVTOL (electric vertical takeoff and landing) and other remotely piloted vehicles with existing flight operations.



ATLANTIC CITY AAM JITNEY ROUTE

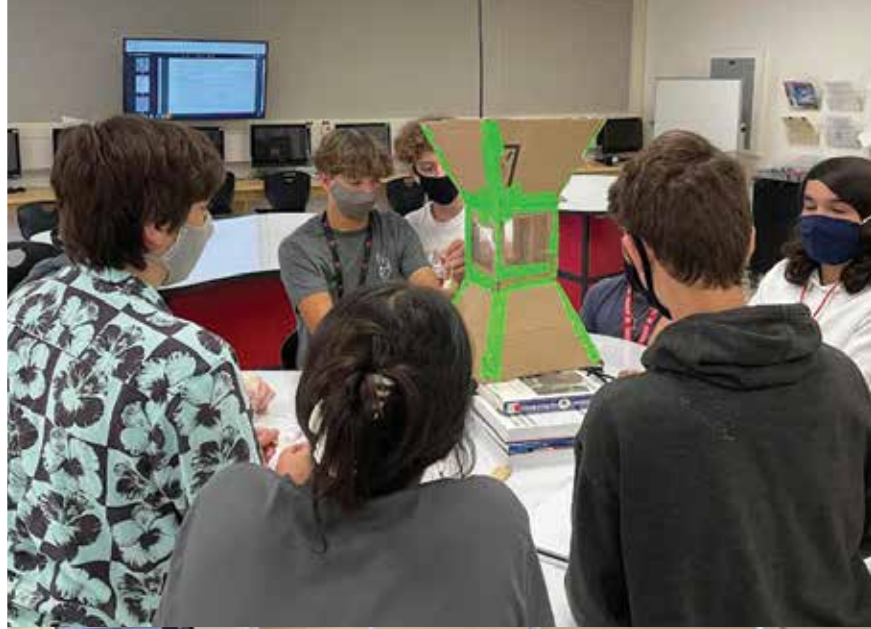
Photo illustrates proposed air jitney route for AAM vehicles to various stops in Atlantic City.

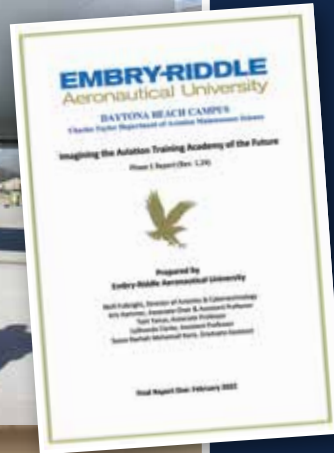


WORKFORCE DEVELOPMENT

■ Embry-Riddle Aeronautical University developed classes taught to high school students at Atlantic County Institute of Technology.

■ Aviation Studies Curriculum taught at Atlantic Cape Community College.





AVIATION TRAINING ACADEMY OF THE FUTURE

■ Atlantic County Economic Alliance, Embry-Riddle Aeronautical University and U.S. Air Force 305th Maintenance Group of Joint Base McGuire-Dix-Lakehurst are working together to develop the Aviation Training Academy of the Future. The hybrid academy will provide traditional Part 147 aviation maintenance technician training and help prepare students for skills needed in emerging technologies including UAS and AAM technologies.



THE AVIATION INNOVATION HUB: AVAILABLE DEVELOPMENT OPPORTUNITIES

Overview of Potential Air Cargo Operations at Atlantic City International Airport (ACY)

GENERAL CHARACTERISTICS

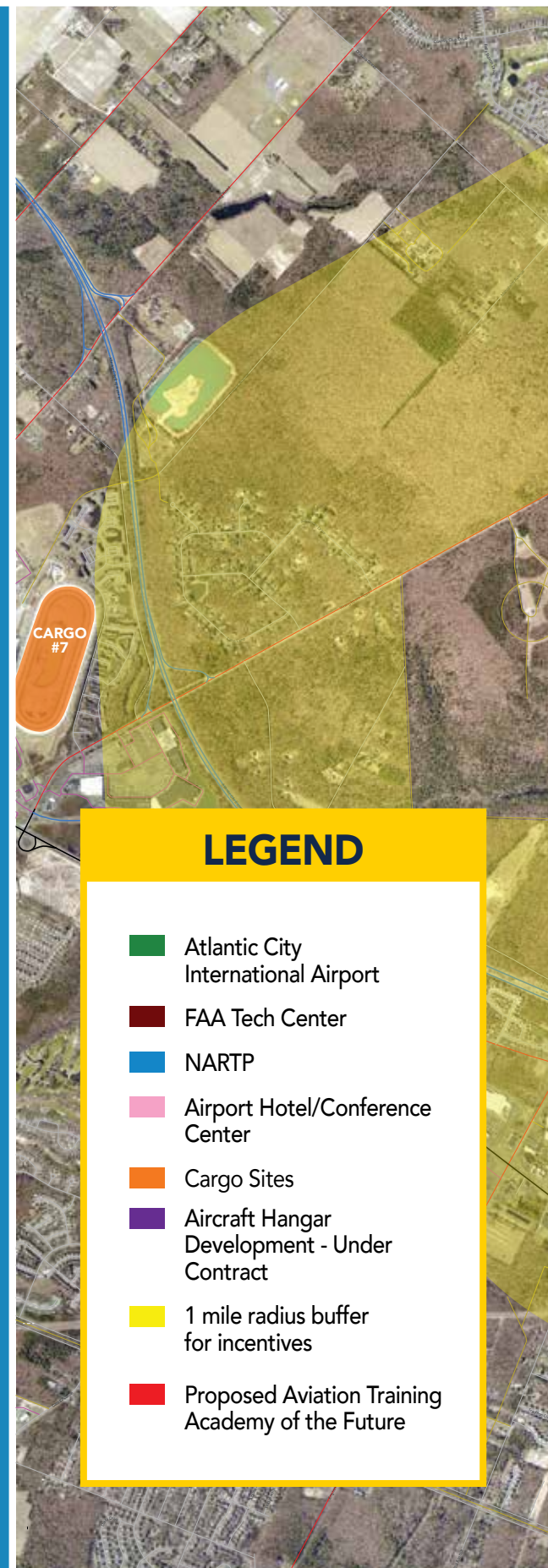
- Airspace is independent from Philadelphia and New York, reducing delays and expenses.
- Airfield is used at 23% capacity.
- Fewer airfield delays and/or closures for winter storms than other airports in the northeast due to ACY's proximity to the Atlantic Ocean.
- 10,000 foot runway with near all-weather operational capacity.
- Warehouses nearby with potential to develop millions of square feet and cold storage.
- Attractive business environment and part of a Federal Opportunity Zone.
- Class C Airspace lays just outside of Philadelphia's Class B and New York's Class B Airspaces. Aircraft using ACY can avoid: Flow Control Delays, Ground Stops, Holding Patterns, Arrival Sequencing Delays, Departure Sequencing Delays, and Taxi Delays.

GEOGRAPHIC PROXIMITY

- 56 miles to Philadelphia Airport (PHL)
- 110 miles to Newark Liberty Airport (EWR)
- 154 miles to Baltimore Washington International Airport (BWI)

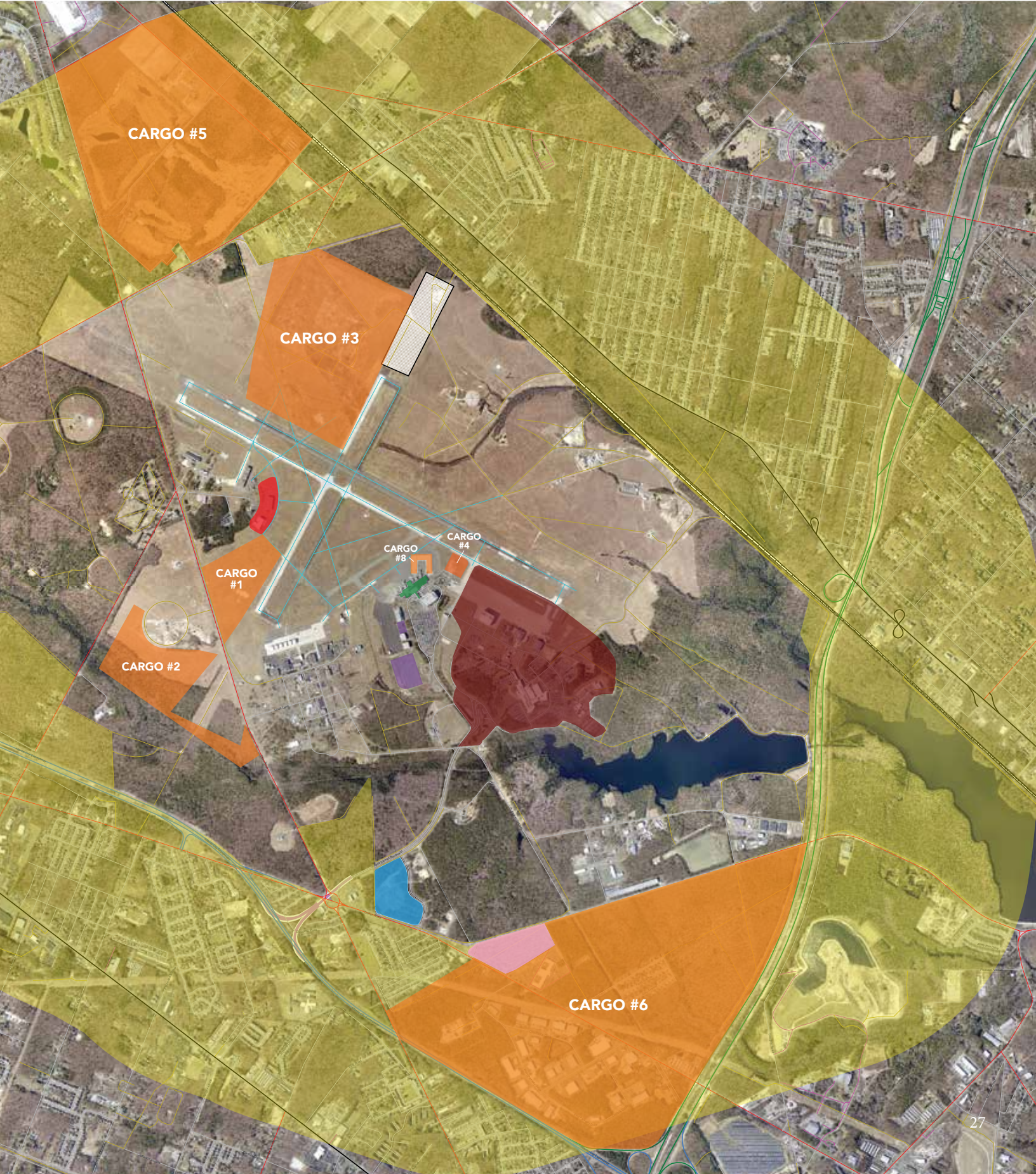
INTERMODAL ACCESS

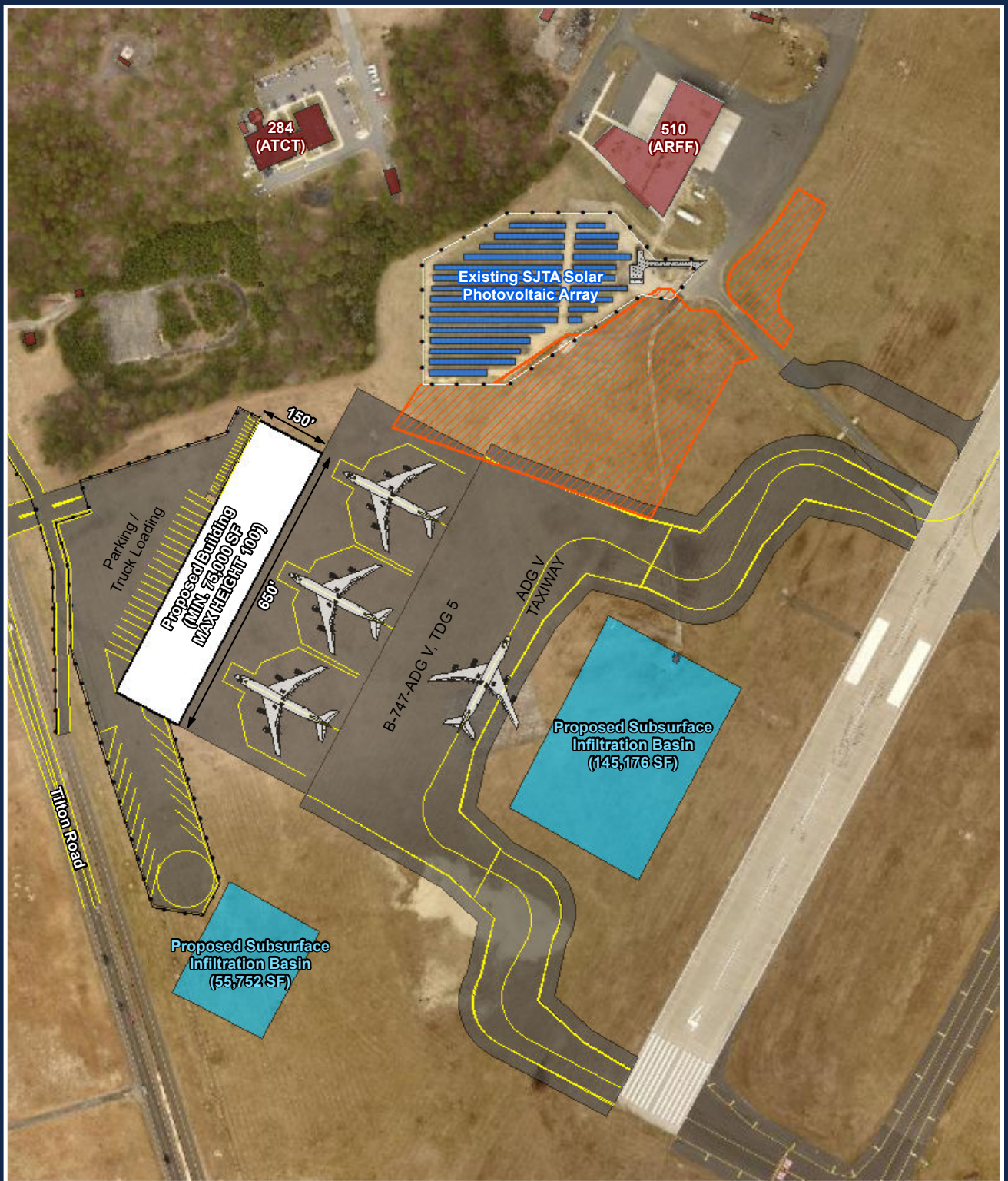
- Proximity to 60 million customers
- Convenient access to highway systems
 - Atlantic City Expressway one mile from ACY
 - Drive time to Philadelphia is one hour
 - I-95 and the NJ Turnpike within one hour drive time
 - Drive time to New York City is two hours
- Atlantic City Rail Line Runs through Airport property



LEGEND

- Atlantic City International Airport
- FAA Tech Center
- NARTP
- Airport Hotel/Conference Center
- Cargo Sites
- Aircraft Hangar Development - Under Contract
- 1 mile radius buffer for incentives
- Proposed Aviation Training Academy of the Future





1. PROPOSED AIR CARGO INFRASTRUCTURE AT ACY, AIRSIDE - SITE 1

PROJECT DESCRIPTION

Airfield Site 1. 20 Acres



2. PROPOSED AIR CARGO LANDSIDE WAREHOUSE SITE

PROJECT DESCRIPTION

Air Cargo Landside Warehouse Site. 79 acres. Site would be able to accommodate 11 – 50,000 square foot buildings.



4. PROPOSED AIRPORT APRON EXTENSION

PROJECT DESCRIPTION

Add pavement for a 130,000 square foot apron extension at ACY to allow for additional hangers.



PROJECT DESCRIPTION

Construct a hangar large enough to service commercial aircraft (Airbus 320) at ACY.



INCENTIVES

The state-designated "Aviation District" encompasses all areas within a one-mile radius of ACY and the FAA Tech Center. State income tax credits are available from the New Jersey Economic Development Authority for certain businesses that create jobs in the Aviation District. For more information about Aviation District tax credits, workforce training grants, job recruitment, energy efficiency grants, permitting assistance, and other potential forms of support for your business, contact the Atlantic County Economic Alliance at:

**(609) 245-0019 or via email
at adminassist@aceanj.com.**

**SOUTH JERSEY HAS A
TOTAL POPULATION OF
1,854,453, INCLUDING THE
COUNTIES OF ATLANTIC,
BURLINGTON, CAMDEN,
CAPE MAY, CUMBERLAND,
GLOUCESTER AND SALEM.**

THE AVIATION INNOVATION HUB: EASY ACCESS FROM ANYWHERE

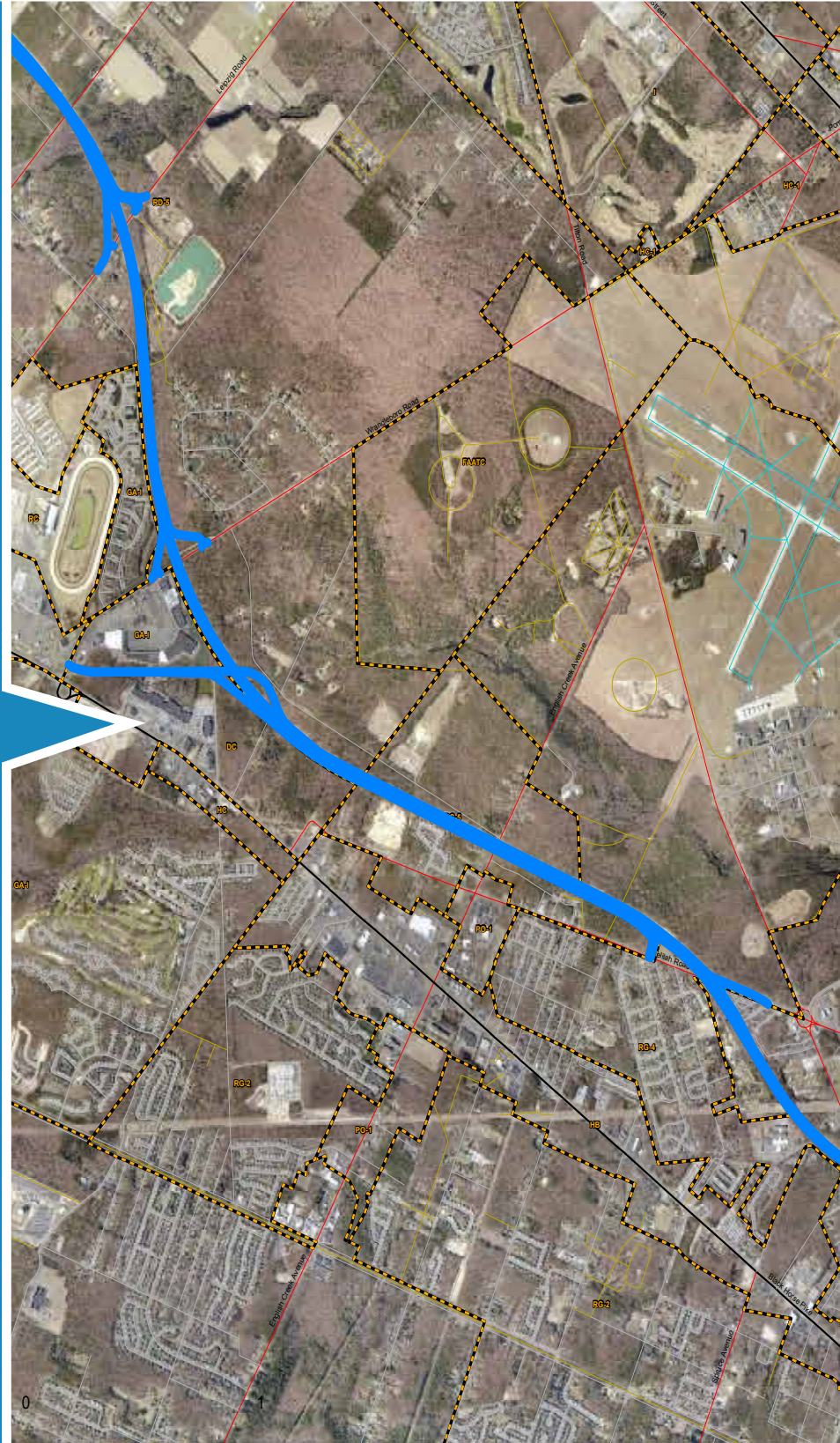
ATLANTIC CITY EXPRESSWAY

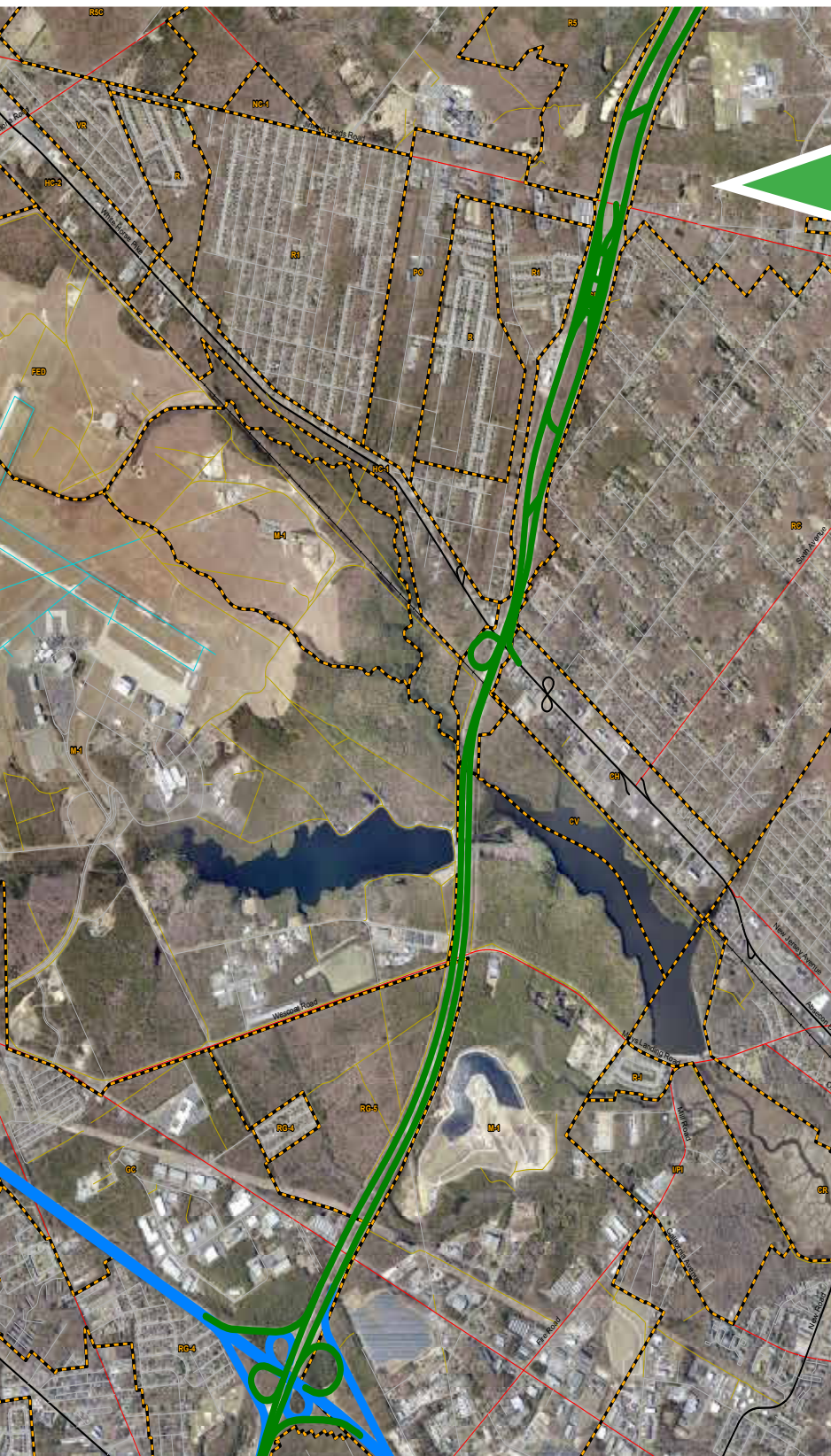
The 44-mile Atlantic City Expressway (ACE) connects the Philadelphia metropolitan area with Atlantic City and other South Jersey shore communities.

The AC Expressway begins at Atlantic City and ends at Route 42 in Turnersville in Washington Township, Gloucester County. The Philadelphia bridges and several major roadways, including the NJ Turnpike and Rt. 295, are easily accessible within minutes of this northwest terminus.

Over the past 10 years, an average of 51.3 million toll-paying vehicles per year have traveled the AC Expressway.

The driving distance between Atlantic City International Airport (ACY) and Philadelphia International Airport (PHL) is 56 miles. The approximate travel time by car is one hour.





GARDEN STATE PARKWAY

The 173-mile Garden State Parkway (GSP) stretches from the Cape May-Lewes Ferry in Cape May to Montvale at the New York State line, following a south-to-north path along the eastern side of the state.

More than 388 million vehicles traveled the Parkway in 2018. The Parkway is four lanes south of milepost 35 in Atlantic County and north of milepost 168 in Bergen County, but it is much wider in between.

The driving distance between Atlantic City International Airport (ACY) and Newark Liberty International Airport (EWR) is about 111 miles, with travel time by car estimated at one hour and 40 minutes.

WHY SOUTH JERSEY?

The Greater Atlantic City area is an ideal business location beyond its historic beaches, boardwalk, casinos and shopping options.

RELOCATION

When your company chooses Atlantic County in southern New Jersey, you get easy access to major markets without the high cost of other urban areas. Whether you are interested in starting a business, relocating, or expanding your business, Atlantic County offers a wealth of opportunities among its 567 square miles.

AT THE CENTER OF IT ALL

Located between lush farmlands and 14 miles of sandy shorelines, Atlantic County offers easy access to Philadelphia (60 miles), New York City (120 miles) and Washington, DC (180 miles), making us the best address for business in the Northeast.

QUALITY EDUCATION FOR YOUR FAMILY

Atlantic County is home to a nationally-recognized university, a comprehensive community college, a blue-ribbon technical high school, and numerous outstanding public, private and charter schools.





QUALITY OF LIFE

Atlantic County attracts more than 25 million visitors each year in addition to 10,000 second homeowners. From the excitement of Atlantic City's casinos with world-class dining, entertainment and shopping, to the beauty of our scenic rivers and wildlife refuges, there is something for everyone!

- Beaches and Boardwalk
- Shopping
- Casinos and Gaming
- Dining
- Arts and Culture
- Health Care

ECONOMIC DEVELOPMENT

Our public and private partners provide a wide range of services, from research collaboration to regulatory and legal assistance, to workforce training and more to ensure your smooth landing. The Atlantic County Economic Alliance can match your company with a plethora of lending, grant and incentive programs, while providing assistance in finding the ideal location to suit your company's needs.

For more valuable information about Atlantic County, NJ, visit www.aceanj.com.

NEW JERSEY

- #1 PORT FOR IMPORTS IN THE U.S.
- 340+ U.S. CITIES SERVED NON-STOP
- 20 FORTUNE 500 COMPANIES CALL NEW JERSEY HOME

Airports in the New Jersey/New York/Philadelphia metro area combined create the largest airport system in the U.S., the second largest in the world in passenger traffic and the largest globally in total flight operations.

In 2017, a 190-acre state-of-the-art marine terminal opened at the Paulsboro Marine Terminal on the Delaware River to significantly increase shipping capacity.

In 2021, New Jersey officials approved the largest offshore wind project in the United States. The project was the second large-scale offshore wind project to be approved in New Jersey. The state's clean energy goals call for 7,500 MW of offshore wind energy by 2035, which will establish New Jersey as a leader in offshore wind development.

A four-story, 111-room hotel adjacent to the Aviation District was approved in 2021. Schoffer Enterprises LLC plans to build the hotel, along with restaurants, a 24,200-square-foot convention center and two more hotels in later phases of the project, called the Airport Business Center.



Paulsboro Marine Terminal



Offshore Wind Farm



Airport Business Center

ACCESSING THE AVIATION INNOVATION HUB

The Atlantic County Economic Alliance (ACEA) is your concierge to the Aviation Innovation Hub.
www.aceanj.com

The ACEA is a private, nonprofit economic development corporation established for business attraction and retention in Atlantic County, New Jersey.

ACEA acts as a business facilitator, helping companies identify and access all government assistance and tax/financial incentive programs as well as financing opportunities.

For more information or to schedule a visit call (609) 245-0019 or email adminassist@aceanj.com.



CENTRALLY LOCATED IN THE UNITED STATES' NORTHEAST CORRIDOR, THE AVIATION INNOVATION HUB LIES WITHIN A REGION THAT IS PRIMED FOR AERONAUTIC AND AVIATION BUSINESSES, WHICH ARE ALSO ATTRACTING NEW TECHNOLOGY COMPANIES TO COMPLEMENT EXISTING SERVICES.

When you choose New Jersey, you connect to the world.



260

INTERNATIONAL
DESTINATIONS



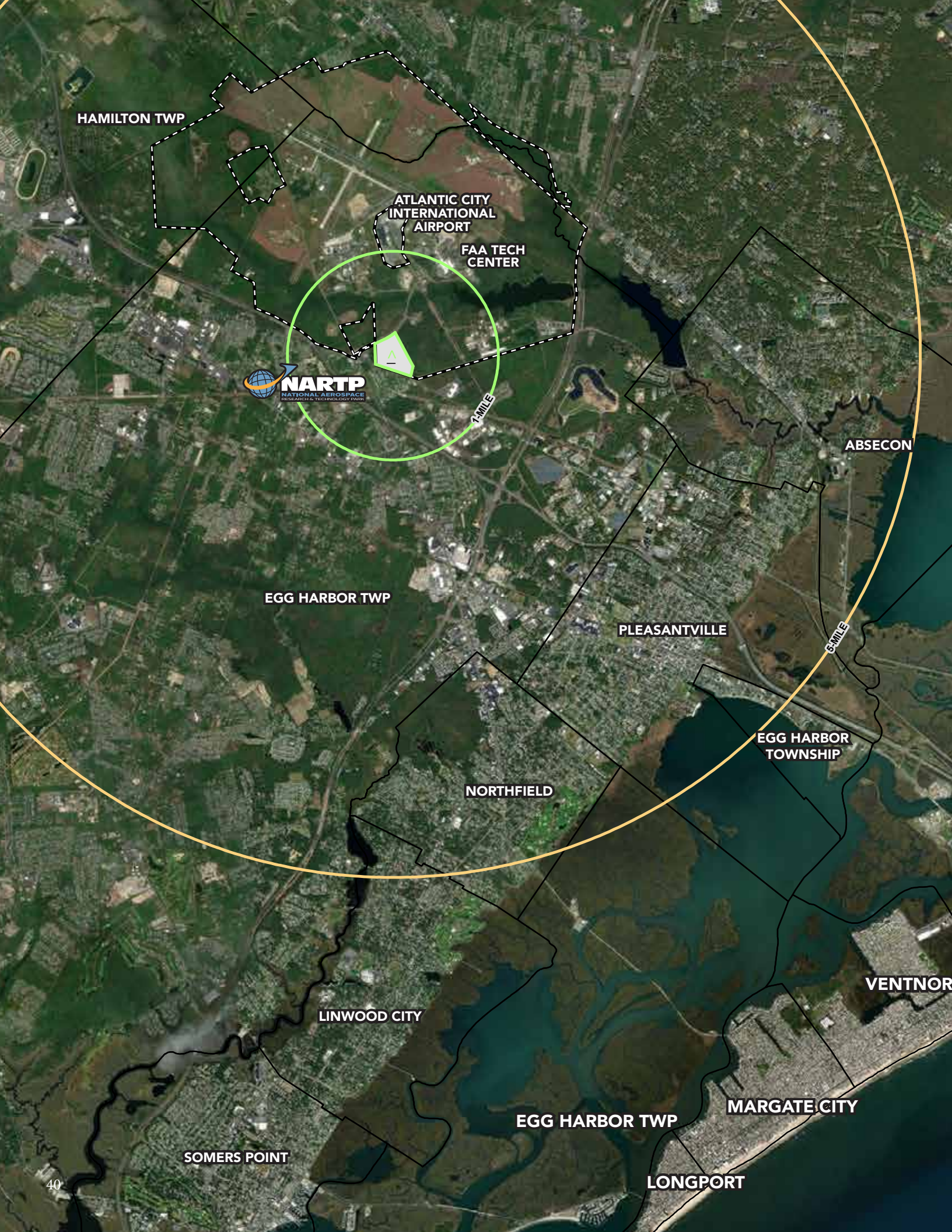
#1

LARGEST
CARGO PORT
ON THE EAST COAST



225

FOREIGN COMPANY
HEADQUARTERS



HAMILTON TWP

ATLANTIC CITY
INTERNATIONAL
AIRPORT

FAA TECH
CENTER



1-MILE

EGG HARBOR TWP

PLEASANTVILLE

ABSECON

6-MILE

EGG HARBOR
TOWNSHIP

NORTHFIELD

LINWOOD CITY

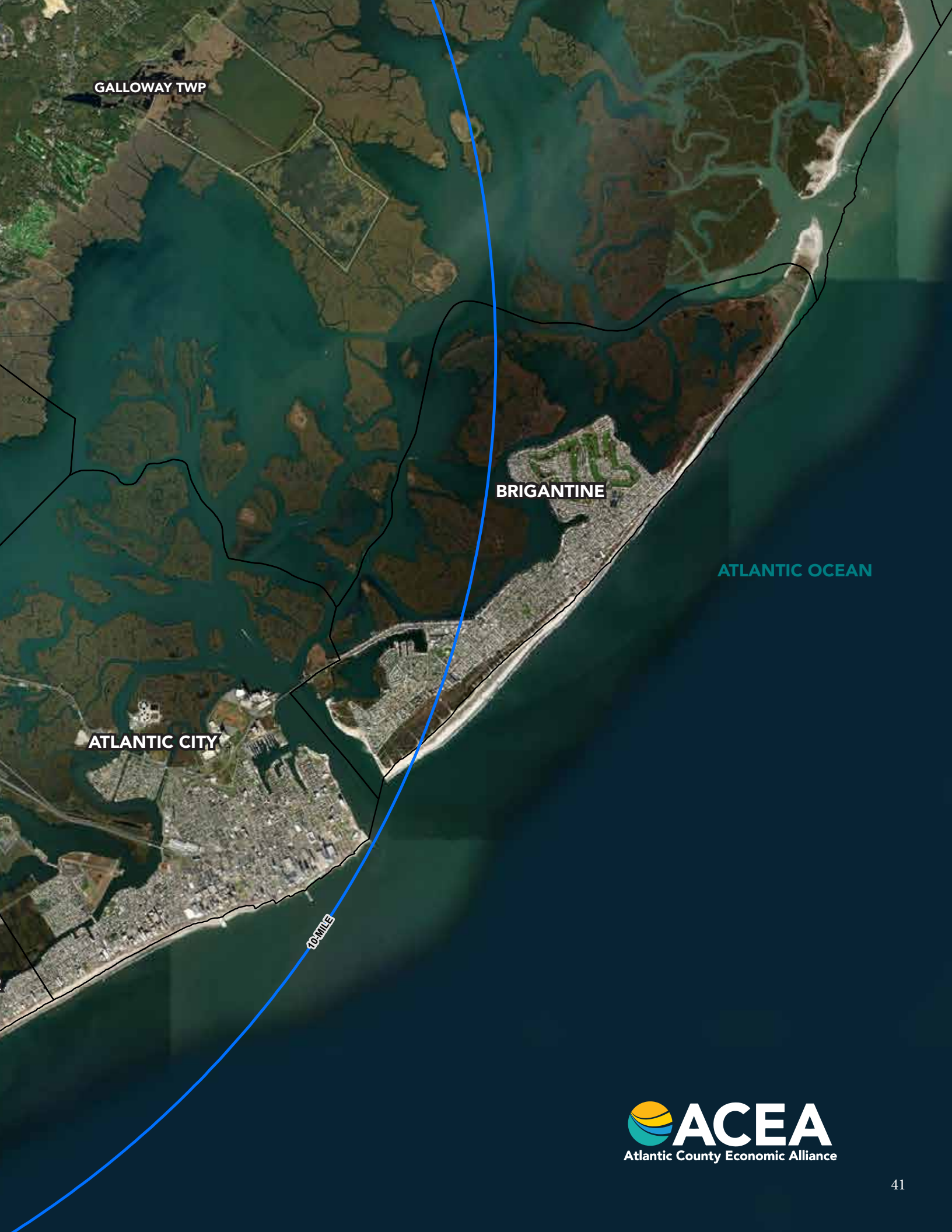
SOMERS POINT

EGG HARBOR TWP

MARGATE CITY

VENTNOR

LONGPORT



GALLOWAY TWP

BRIGANTINE

ATLANTIC OCEAN

ATLANTIC CITY

10 MILE

PRIME LOCATION

New Jersey offers companies access to the most concentrated and affluent consumer market in the world.

New Jersey is located in the middle of the Boston – Washington, D.C. corridor with approximately 56.5 million residents and \$3.75 trillion in economic output.

Your business can serve 38 million consumers within two hours.

Thirty-three percent of the U.S. population is within a day's drive from New Jersey.

New Jersey's railroad density is the nation's highest, with a road and rail network spanning 2,800 miles of interstates and highways.

Interstate 95/New Jersey Turnpike is the primary interstate along the U.S. East Coast, enabling access to markets from New England to Florida.

The Garden State Parkway stretches the length of the state from north to south, linking up with the thruways and highways of New York and Pennsylvania.

**NEW JERSEY FEATURES
THE EAST COAST'S LARGEST
SEAPORT, MAKING IT EASY
TO MOVE PRODUCTS
ACROSS THE COUNTRY
OR AROUND THE WORLD.**



(609) 245-0019 www.aceanj.com